

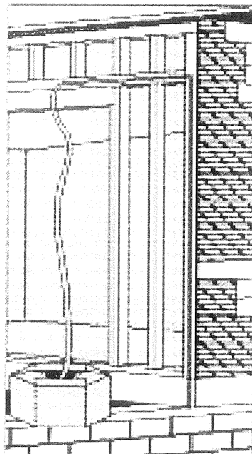
SOF® SEAL Air Infiltration Gasket Installation Guide

Modular Crane Assisted Set (MCA) or HUD Slider Set.

Example: 2 Module Rancher or Double-Wide HUD

Check foundation for plum, square. Confirm elevation with water level. Next, SOF® SEAL "P" Air Infiltration Gasket is attached to Module #1 marriage wall of Modular and HUD manufactured houses with a fastener on 8" - 12" centers with an adjustable plunger pneumatic stapler, with a 1" minimum staple crown. The plunger is adjusted so that the staple will hold the , SOF® SEAL "P" Air Infiltration Gasket tight to the marriage wall without the staple crown penetrating the , SOF® SEAL "P" Air Infiltration Gasket. Roofing nails may be used if they have a head large enough to prevent pull through on the, SOF® SEAL "P" Air Infiltration Gasket nailer strip.

- **MCA & HUD:** Module #1 is the first to be set, usually the back module of the house. Module #2 is the second to be set, usually the front of the house.
- **MCA & HUD:** The set crew should first place Module #1 with the , SOF® SEAL "P" Air Infiltration Gasket.. If it is damaged during the set, then the crew will be able to repair or replace the damaged SOF® SEAL "P" Air Infiltration Gasket section before setting Module #2. Extra , SOF® SEAL "P" Air Infiltration Gasket should be available with all set crews.
- **HUD: Marriage Wall - Module #1:** , SOF® SEAL "P" Air Infiltration Gasket is installed completely around the perimeter on one side only of HUD Marriage Wall (See Figure 1).



**Figure 1. HUD
Module #1**

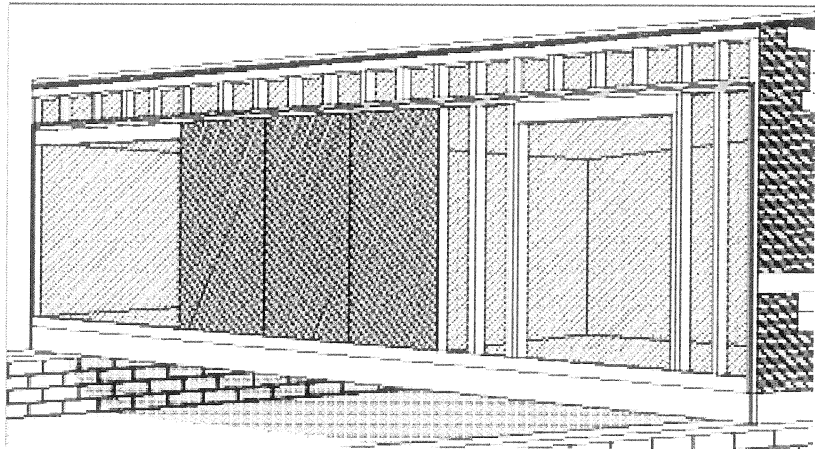
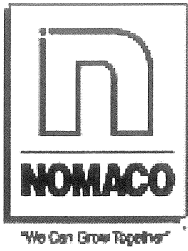


Figure 2. MCA Module #1

- **MCA, Marriage Wall - Module #1:** A continuous length of , SOF® SEAL "P" Air Infiltration Gasket is fastened up the exterior wall stud, along the center line of the top length of the marriage wall beam, and down the opposite exterior wall stud to the bottom of the girder of Module #1 (See Figure 2).

Caution: To guard the , SOF® SEAL "P" Air Infiltration Gasket from winch line abrasion or damage during the crane assisted set, two 2"x4" blocks 36" long should be placed at the top plate where the winch line would cross the , SOF® SEAL "P" Air Infiltration Gasket during the lifting of the Module #1. The 2x4 block must be removed after Module #1 is set, and before Module #2 is placed against Module #1.

501 NMC DRIVE
ZEBULON
NORTH CAROLINA
27597
919/269-6500
FAX 919/269-7936



- **MCA, Marriage Wall - Module #2:** A continuous length of , SOF® SEAL "P" Air Infiltration Gasket is then installed to the center line of the marriage wall floor girder of Module #2 (See Figure 3).

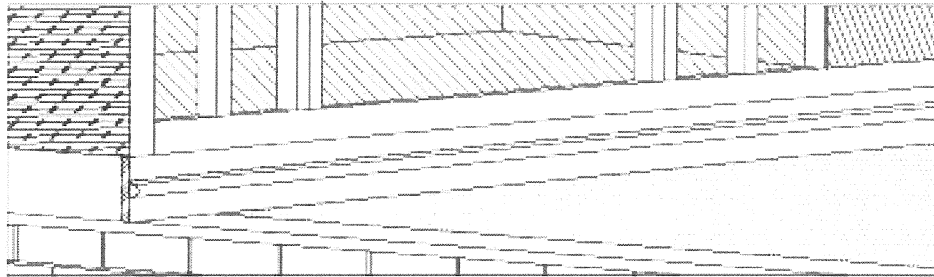
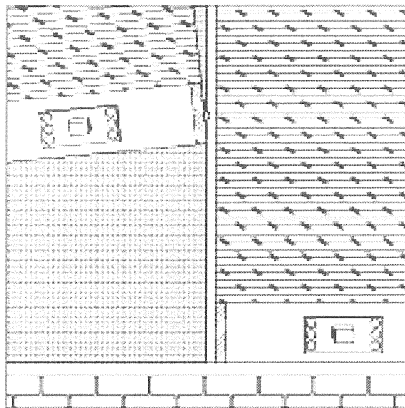


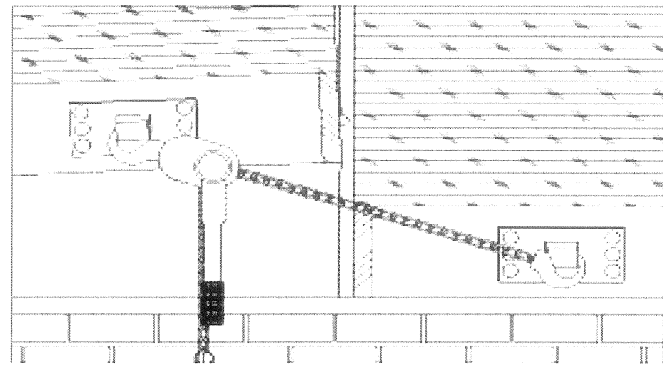
Figure 3. MCA Module #2

- **MCA NOTE:** The , SOF® SEAL "P" Air Infiltration Gasket will over-lap at the point where the exterior wall of Module #1 meets the , SOF® SEAL "P" Air Infiltration Gasket on the floor girder of Module #2.
- Caution:** When lifting Module #2, there should be a slow initial contact of the winch line against Module #2, to prevent winch line damage to the , SOF® SEAL "P" Air Infiltration Gasket and/or exterior finished siding of the structure.
- **MCA & HUD:** "COME-A-LONG" cleats are attached to the band joist, 18" from the marriage joist (See Figure 4).
 - **MCA NOTE:** Module #2, on the left, has , SOF® SEAL "P" Air Infiltration Gasket centered on bottom girder. Module #1 is on the right. , SOF® SEAL "P" Air Infiltration Gasket is on exterior edge of marriage wall and is centered on top header.



Module #1 Module #2

Figure 4.



Module #1 Module #2

Figure 5.

- **MCA:** When Module #2 is starting to set, it will be at a 30° angle to Module #1. The front of Module #2 is spotted on the exterior edge of the front foundation. The marriage wall of Module #2 will be touching Module #1 marriage wall about 36" above the girder (See Figure 5).
- **MCA & HUD:** At this time, use a "COME-A-LONG" to assist in pulling the two modules tight together (See Figure 6).
- **MCA & HUD:** Wet spray foam is used to fill any voids created in the marriage wall , SOF® SEAL "P" Air Infiltration Gasket after winch line is removed. When constructing two story Modular, multi-section units, SOF® SEAL "P" Air Infiltration Gasket may be used between the lower section ceiling band joist and the second floor band joist, around the second floor perimeter of the house. This will seal the gaps caused by the crown of the 2"x10" band joist. Dormers and other house modules should also have , SOF® SEAL "P" Air Infiltration Gasket at their interface before flashing.

501 NMC DRIVE
ZEBULON
NORTH CAROLINA
27597
919/269-6500
FAX 919/269-7936